

Message started by swarrans on 25. Nov 2011 at 08:42

Title: **Pat Teakle ASW20 Restoration**

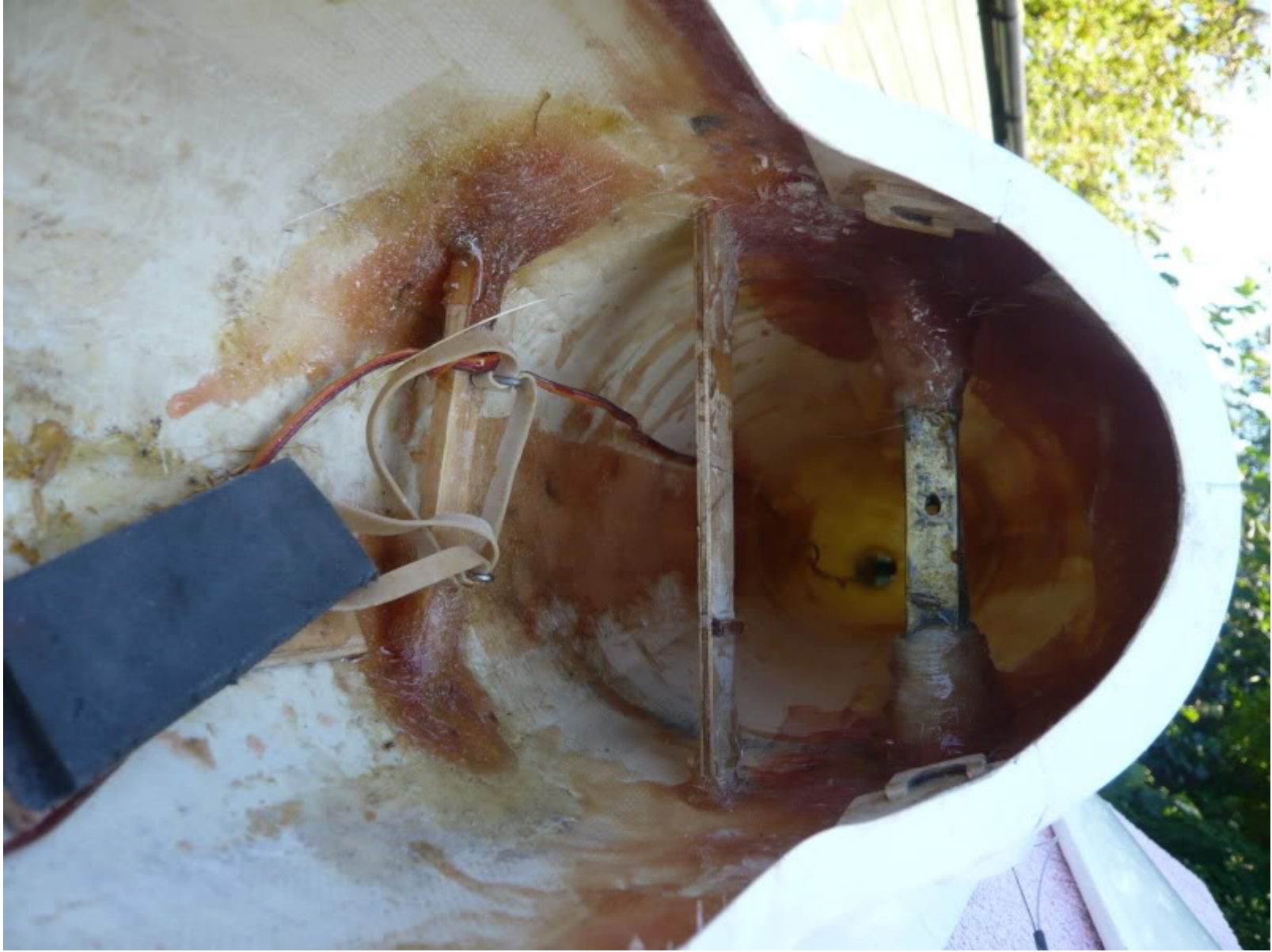
Post by **swarrans** on **25. Nov 2011 at 08:42**

This is just a quick summary of my restoration of a stretched ASW20 purchased off "Bill" via this site - many thanks Bill I'm in love (with the glider not you I hasten to add!).

I decided to re-do the polyester repair of the fuselage and wing seat because it hadn't adhered well enough - this is what I took out!

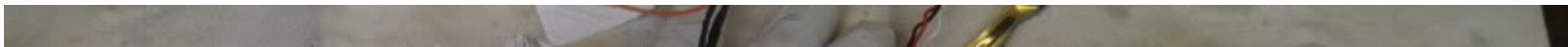


Before and after of the inside of the fuselage





Then I decided to convert the single bell cranked elevator servo to dual servo mounted in the tailplane



Title: **Re: Pat Teakle ASW20 Restoration**
Post by **Chris Jesshope** on **25. Nov 2011 at 13:15**

Hi Simon,

nice video!

I am going to maiden my HP14C, another thread in this section, which has a pair of PT wings with flaps to the root. I have balanced on the wing joiner but would be interested to know where you ended up with the CoG, as a percentage of root chord.

Chris

Title: **Re: Pat Teakle ASW20 Restoration**
Post by **swarrans** on **25. Nov 2011 at 13:36**

Good luck with your maiden Chris.

I moved back a LOOOONG way (well removing 485 grams would I guess!). I've ended up at 98mm which is about 36% of chord at root. It doesn't seem to have any bad habits yet, so I might push it a bit further still

Simon

Title: **Re: Pat Teakle ASW20 Restoration**
Post by **Chris Jesshope** on **25. Nov 2011 at 13:51**

Thanks... I think I am at about 35% on the joiner.

This sunday is looking good for the Mynd, I'll see if I can capture some video.

Chris

Title: **Re: Pat Teakle ASW20 Restoration**
Post by **swarrans** on **30. Nov 2011 at 18:18**

Here's a short video (trying to) show the impact of removing nose weight. Ended up taking out 485 grams and the cg going from 2.5 inches to nearly 4

<http://youtu.be/ektXKRleLpk>

Regards

Simon