

Scale Soaring UK

The forum for all your modelling requirements relating to scale gliders
<https://scalesoaring.co.uk/phpBB3/>

1/4 scale Hall Cherokee II

<https://scalesoaring.co.uk/phpBB3/viewtopic.php?f=12&t=642>

Re: 1/4 scale Hall Cherokee II

Page 1 of 1

by **Dion Dunn**

Posted: **29 Aug 2017, 03:54**

That plane is rock solid on all accounts, but I'll admit to holding my breath watching the windy landing!

Re: 1/4 scale Hall Cherokee II

by **Dave Smith**

Posted: **29 Jun 2017, 02:59**

Here's how the 1/3 scale Cherokee handles some serious wind....

<https://www.youtube.com/watch?v=4bNa1wCSfY0>

Compared to no wind...

https://www.youtube.com/watch?v=4cEv-oOVc_c

Re: 1/4 scale Hall Cherokee II

by **Roger-Spragg**

Posted: **28 Jun 2017, 10:48**

Very nice! I have N871Z, 1/3 scale, built by Terry Holland to the David Smith plan. It flies like a dream even on the windy day when the glass ships stay on the ground! It's still my favourite. Someone is going to have fun!!!
Roger

Re: 1/4 scale Hall Cherokee II

by **chris williams**

Posted: **28 Jun 2017, 10:22**

That's real nice, Dave...

Re: 1/4 scale Hall Cherokee II

by **Dave Smith**

Posted: **28 Jun 2017, 04:23**

Not the 1/4 scale version, but my friend Gene Cope has just finished his 1/3 scale representation of Dean Gradwell's beautiful N72DG.

This was a spectacular, highly detailed scale build and the results are superb. Still some real building skills across the pond 😊

Picture here:

<https://www.rcgroups.com/forums/showpos ... tcount=144>

Dave Smith

Re: 1/4 scale Hall Cherokee II

by **RobbieB**

Posted: **31 Mar 2017, 09:08**

Dion Dunn wrote:

'..... but she said that she would never do it again no matter how much she was offered. So don't ask.' 😊

Best keep the original files safe then Dion!

Very nice.

Re: 1/4 scale Hall Cherokee II

by **Martynk**

Posted: **31 Mar 2017, 08:30**

I have to admit that Indian chief graphic looks very impressive. It must be very useful having a talented wife who is prepared to be part of the build process..

Re: 1/4 scale Hall Cherokee II

by **Dion Dunn**

Posted: **31 Mar 2017, 00:53**

Final pic and update for the build log. She will fly soon, most likely via winch which is what I asked for when Dave made modifications to the plans for me. I wanted a beefier center rod and spar so I could haul this thing up the winch line without too much worry, so that will most likely be the primary launch method for the time being. Thanks Dave for making those updates so long ago.

I'd like to thank my Wife for putting in some long hours trying to figure out the optimal way to cut the vinyl graphics for this nose using her Cricket machine. I loved the way it turned out because each color is an individual piece, but she said that she would never do it again no matter how much she was offered. So don't ask. 😊



Re: 1/4 scale Hall Cherokee II

by **Dion Dunn**

Posted: **27 Mar 2017, 19:17**

Pics of the new numbers as well as my Wife starting to work on the vinyl Chief graphic for the front courtesy of Dave Smith.

My Wife does a lot of arts/crafts, and her new Cricket vinyl cutter works well for making model stuff too! But this multi-layer vinyl graphic has her thinking more than normal, so I have a feeling that this is going to be a fairly lengthy pay-back period for me. In the last picture, the black outline is the first cut layer of vinyl stuck to the backing paper. The color comes next.



Re: 1/4 scale Hall Cherokee II

by **Dion Dunn**

Posted: **26 Mar 2017, 20:48**

Ok, small update. My Wife got the vinyl cutter going today and I managed to get some numbers on it. Next comes the Cherokee on the front.

Re: 1/4 scale Hall Cherokee II

by **Dion Dunn**

Posted: **26 Mar 2017, 15:11**

No crashes, no maiden, no nothing....

But as soon as ARUP finishes up that Tow plane maybe we can get a maiden accomplished. Yes, I'll blame it on Michael. LOL

Re: 1/4 scale Hall Cherokee II

by **Dave Smith**

Posted: **24 Mar 2017, 22:14**

Dion, what's the scoop? Maiden, wonderful summer of flying, adoring sailplane groupies unable to keep their hands off you.....or spin and crash beyond recognition?

Re: 1/4 scale Hall Cherokee II

by **Dion Dunn**

Posted: **23 Aug 2016, 03:46**

Thanks Dave.

Late evening beauty shots....



Re: 1/4 scale Hall Cherokee II

by **Dave Smith**

Posted: **22 Aug 2016, 01:36**

Dion,

Really like the open space on the fuselage to show the structure. Great paint scheme!

DS

Re: 1/4 scale Hall Cherokee II

by **Dion Dunn**

Posted: **16 Aug 2016, 04:11**

Hinged



Re: 1/4 scale Hall Cherokee II

by **Dion Dunn**

Posted: **15 Aug 2016, 02:38**

Thanks! I managed to get some paint on the wings today too before ARUP came over for the in person inspection.



Re: 1/4 scale Hall Cherokee II

by **RobbieB**

Posted: **14 Aug 2016, 10:16**

Dion,

Really looking good.

Re: 1/4 scale Hall Cherokee II

by **Dion Dunn**

Posted: **14 Aug 2016, 04:03**

Finally getting some paint down.





Re: 1/4 scale Hall Cherokee II

by **Dave Smith**

Posted: **27 Jul 2016, 18:27**

Looking really good, Dion!

Keep 'er going!

Dave

Re: 1/4 scale Hall Cherokee II

by **Dion Dunn**

Posted: **16 Jul 2016, 00:10**

Sorry, my once per decade update.....

The canopy is not tinted, but it does kind of look like it.

She is all covered. Lots of Sig Koverall and WBPU, and we are ready for paint. But I thought I'd take a couple of glamour shots in the nude first.



Re: 1/4 scale Hall Cherokee IIby **ingrahal**Posted: **29 May 2016, 09:09**

Hey Dion, it looks like you tinted the canopy. If so what with?

Re: 1/4 scale Hall Cherokee IIby **Dion Dunn**Posted: **15 Mar 2016, 23:12**

Great idea Dave. Thanks for the tip!

Re: 1/4 scale Hall Cherokee IIby **Dave Smith**Posted: **14 Mar 2016, 01:17**

Dion,

Looking great!

Just a heads up.....I would do a "test drive" with a piece of covering material over the top part of the nose. Can be anything; monokote, ultracote, whatever you have around. This will show you if the lines are right, particularly for the larger solid horizontal piece at the top of the nose. My experience has been, having covered three Cherokee fuselages, that there is a tendency to leave that piece a little proud, and once you have covered the whole side in one piece of Solartex, it's a lot to peel off and throw away if it doesn't look right. Try it out and then you can sand it down a bit or not, depending on how it looks.

Worth a thought.

DS

Re: 1/4 scale Hall Cherokee IIby **Dion Dunn**Posted: **13 Mar 2016, 23:42**

I haven't posted in a while, mainly because my progress has been so intermittent that I've never felt the need to add anything incremental to the build log. When the real job calls, you got to do what you got to do!

But, I have made a fair bit of progress on the cockpit, final sanding, and some staining. The airframe is also balanced with no additional lead needed in the nose. I even have a set of glider instruments from iflytallies.com. I made a couple of latches for the canopy, and they turned out working very well. Not bad for my first try at making working latches.





Re: 1/4 scale Hall Cherokee II

by **Dave Smith**

Posted: **02 Mar 2016, 17:00**

Just fishing through some old notes and I found the provenance of the Cherokee graphic that is used on some of these, per Vince's post early on in this thread.

https://en.wikipedia.org/wiki/Lafayette_Escadrille

Interesting choice for a sailplane 🤔

Dave Smith

Re: 1/4 scale Hall Cherokee IIby **Dion Dunn**Posted: **17 Feb 2016, 11:56**

But I did manage to get the weight within 2 grams side to side before final sanding. That's pretty darn good!

Re: 1/4 scale Hall Cherokee IIby **RobbieB**Posted: **16 Feb 2016, 17:40**

Yes Dion,

I was sure everyone would see the tongue in cheek element in the post.

Re: 1/4 scale Hall Cherokee IIby **Barry_Cole**Posted: **16 Feb 2016, 16:38**

Sorry Dion,

You have to be careful what you write here, it does not take much to get us going.

Anyway, there are two types of modeller, those who have built two identical wings or fuselage sides, and those who are going to...

Even the great Mr Williams, has just had a case of wingitus....

Great build, keep it up.



BC

Re: 1/4 scale Hall Cherokee IIby **Dion Dunn**Posted: **16 Feb 2016, 14:40**

I'm assuming you guys are saying this tongue in cheek, because that's what I would say too.

I didn't screw anything up, nor did I build both sides identical. It was just a normal wing build that went without a hitch and had the same detail pics as the first wing.

Re: 1/4 scale Hall Cherokee IIby **Barry_Cole**Posted: **16 Feb 2016, 14:29**

RobbieB wrote:

Dion Dunn wrote:

'I haven't posted any pics because the right wing is just like the left wing.....' 😊

Whoops!

I was going to say that, and then I thought. No, that would be stupid.....



BC

Re: 1/4 scale Hall Cherokee II

by **chris williams**

Posted: **16 Feb 2016, 11:21**

Been there, etc...looking good, Dion

Re: 1/4 scale Hall Cherokee II

by **RobbieB**

Posted: **16 Feb 2016, 11:13**

Dion Dunn wrote:

'I haven't posted any pics because the right wing is just like the left wing.....' 😊

Whoops!

Re: 1/4 scale Hall Cherokee II

by **Dion Dunn**

Posted: **16 Feb 2016, 00:53**

I haven't posted any pics because the right wing is just like the left wing. 😊

Here she is after her first assembly. I have a few minor tweaks, but I'm pretty happy so far.



Re: 1/4 scale Hall Cherokee II

by **Dion Dunn**

Posted: **05 Feb 2016, 16:06**

Hey, no worries Art. I'm kind of happy with the way the canopy is turning out. Michael's should be fine.

Thanks for checking in.

Re: 1/4 scale Hall Cherokee II

by **ingrahal**

Posted: **05 Feb 2016, 06:01**

Hey Dion, sorry I haven't been following. I've been in deer hunting mode for 3 months. She's looking good. Can't figure out what went wrong with the canopy but glad you were able to use it. I made the plug from my plans and I know I had that canopy fitted on my fuselage before I changed to the longer canopy of N72DG. I'll have to revisit my plans and check that plug.

Michael, let me know if yours is too short and I'll send you a long one.

Art

Re: 1/4 scale Hall Cherokee II

by **Dion Dunn**

Posted: **04 Feb 2016, 19:00**

I usually use a combination of CA then wood glue then CA. Eliminates the need for weights, clamps or pins.

Id like to see your tool however.

Re: 1/4 scale Hall Cherokee II

by **Dion Dunn**

Posted: **02 Feb 2016, 19:22**

Thanks Dave. Slowly but surely!

Re: 1/4 scale Hall Cherokee II

by **Dave Smith**

Posted: **02 Feb 2016, 01:05**

Well done, Dion! You're almost there. I think you've passed the 80% done, 80% left to do point!

Dave Smith

Re: 1/4 scale Hall Cherokee II

by **B Sharp**

Posted: **01 Feb 2016, 16:11**

Very tidy Dion, that's coming along nicely. I agree with you on the cap strips. It's usually the last thing I add to a wing prior to sanding and usually signifies "Job Done".

Brian. 😊

Re: 1/4 scale Hall Cherokee II

by **Dion Dunn**

Posted: **01 Feb 2016, 01:46**

This weekend I managed to finish up this half of the wing including the aileron setup and spoiler linkage. While building this one, I also managed to make all of the fiddly bits needed for the next wing, so hopefully that one will go a tad quicker. There is something about adding the cap strips that is so satisfying at the end of building a wing half. It sort of helps bring some closure to another aspect of the build.



Re: 1/4 scale Hall Cherokee II

by **Dion Dunn**

Posted: **29 Jan 2016, 12:10**

I think my average working time on the wing is about 2-4 minutes per session, so it's going slow, but it's going.....



making sure the trailing edge stays straight



aileron cut and servo mounted



spoiler servo mounted



top sheeting on

Re: 1/4 scale Hall Cherokee II

by **Dion Dunn**

Slowly working on the wings

Posted: **22 Jan 2016, 02:31**



Re: 1/4 scale Hall Cherokee II

by **Dion Dunn**

Posted: **10 Jan 2016, 21:13**

Today was stringer day, and I'm glad it's over.....





Re: 1/4 scale Hall Cherokee II

by **Dion Dunn**

Posted: **10 Jan 2016, 12:53**

Thank you Gentlemen, much appreciated.

I've had some fiddly work lately. Unfortunately, some of it repair work. Early last week my Wife sends me a text and asks if the fuselage was supposed to be laying on its side. Ummm, no it shouldn't. But somehow it slipped out of the foam blocks that it was nestled in - I'm blaming the cat. Luckily, it didn't fall off the building table, but when the stab hit the bench it torqued the rear of the fuselage and broke out a large chunk of the rear framing. Oh well, it was a minor setback.

I've also managed to finish up the wheel mounting and cross bracing, and because I didn't like my elevator linkage I completely rebuilt that yesterday as well. Now it's much more secure and smoother than before. No pics because it looks the same for the most part.





Re: 1/4 scale Hall Cherokee II

by **Barry_Cole**

Posted: **10 Jan 2016, 10:33**

Dion Dunn wrote:

Gee, thanks to the only person watching this build log. 😊

Just wait until you make a mistake, then you will see how many people are watching...

Great build, keep it up.

BC

Re: 1/4 scale Hall Cherokee II

by **RobbieB**

Posted: **10 Jan 2016, 09:33**

Plenty watching (and enjoying) Dion.....

Re: 1/4 scale Hall Cherokee II

by **Peter Balcombe**

Posted: **10 Jan 2016, 08:10**

It's coming along nicely Dion.

Keep up the good work 😊

Re: 1/4 scale Hall Cherokee II

by **Tom Pack**

Posted: **10 Jan 2016, 04:15**

We're watching.....you're just doing such a great job that there's nothing to say!

Re: 1/4 scale Hall Cherokee II

by **Dion Dunn**

Posted: **10 Jan 2016, 03:57**

Gee, thanks to the only person watching this build log. 😊

Good seeing you again, and thanks for bringing desert!



Re: 1/4 scale Hall Cherokee II

by **Dion Dunn**

Posted: **03 Jan 2016, 00:16**

It's like building a house. The framing is the fast part. Now it starts to slow down with all of the details.

Re: 1/4 scale Hall Cherokee II

by **Dion Dunn**

Posted: **02 Jan 2016, 21:24**

Working on the bottom today. If you notice, I added an extra diagonal brace for the Keal. Needed?, probably not but I wanted to anyway. Besides, I'd rather add weight in front of the CoG that contributes to strength instead of lead in the nose.



Re: 1/4 scale Hall Cherokee II

by **Dion Dunn**

Posted: **31 Dec 2015, 21:26**

And some more progress today. The tow release servo is mounted and the simple release mechanism is fabricated.





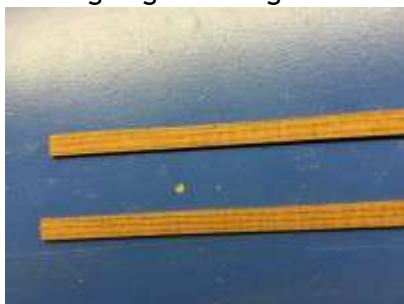
Re: 1/4 scale Hall Cherokee II

by **Dion Dunn**

Posted: **31 Dec 2015, 15:48**

I also have some redwood like material from an old boat build that is extremely flexible when steamed, so I'm using that for the canopy trim.

A little trim work around the edges and some interior detailing before I glue it up, and I think she is going to look good.





Re: 1/4 scale Hall Cherokee II

by **Dion Dunn**

Posted: **31 Dec 2015, 15:45**

We now have most of a canopy after some creative "home builder redesign". It all started when Art gave Michael (ARUP) and I canopies that he vacuum formed off of a pattern for his own Cherokee. Michael took the uncut one, I took the trimmed one, and fast forward to yesterday.

I started to fit the canopy and realized that it had been cut way too short or my opening was a lot bigger than Art's. Either way we were about 1.5" too short. After some text deliberation with Michael and a generous offer to give me his, I decided to make some lemonade out of the situation.

This canopy isn't even the stock configuration for a Cherokee. What I've found with some research over the past several months is that since these were kit planes, and as such were modified by almost every owner, I also decided to make some of my own modifications. I'm not modelling this plan after any particular airframe, so off to the design table I went. I have found that some of the planes have squared wing tips, some rounded, some with a different tail planes, some with fiberglass noses, some with modified turtle decks, even a couple with engines, and yes, lots with different canopies - some home made and some off of other sailplanes.

So what did I do? I made my own canopy and cockpit modifications. You see, my pilot didn't want as much glass and prefers a tad more shade. So I shortened up the opening, and created

the following version. I started by making a pattern of everything first using heavy card stock paper, and when i was satisfied with the fit and design, I used ply and balsa to create the frame.





Re: 1/4 scale Hall Cherokee II

by **Dion Dunn**

Posted: **31 Dec 2015, 15:10**

Well, I've focused on building rather than posting. I've had to work a lot this Holiday season on my money making job, but to keep myself sane I head from my home office straight to the building board. Luckily, I have a family that understands my stress relief is tied to my building activities!

I managed to get the tail surfaces put together. No serious surprises here, and both the stab and rudder/fin turn out to be really strong. I did deviate from the planned elevator connection method and went with a simpler pin/fork idea. It turned out well after a couple of different prototypes were tried. I also made the rudder trailing edge from a lamination of 1/16" ply sandwiched by 1/16" balsa on both sides. It's stiff and straight.

I'll admit to one mistake, and I like to think of it as a mistake I made to improve the stability (or

I can keep telling myself that). When I made the stab mount cradle and lined it all up to be drilled for the mounting screws with the drill press, the stab shifted back about 1/8" further toward the fin than it should be. Since I didn't have the fin built yet, I didn't realize the magnitude of the mistake until I ran into interference between the elevator and the fin leading edge. So rather than redrill the mounting holes and tear out the all of that mess, I notched the elevator to provide clearance. Most people probably won't notice, but in the spirit of "these were kit built planes anyway", why not make a few mods here and there (more of that to come later).....





Re: 1/4 scale Hall Cherokee II

by **Dion Dunn**

Posted: **16 Dec 2015, 01:57**

Thanks Michael. I'm looking forward to some time off over the Holiday's to work on the pin and fork idea that we talked about. We shall see!

Stringers are on the turtle deck and I've started the stab framing.



Re: 1/4 scale Hall Cherokee II

by **Dion Dunn**

Posted: **07 Dec 2015, 16:15**

Thanks for the pics. That's Dean Gradwell's Cherokee, and not only is it spectacular and probably my favorite rendition of the Cherokee, it's already been modeled in an equally excellent way by Art in the US. I've seen the model up close, and it is stunning!

[http://scalesoaring.com/forum/forum/aer ... okee-build](http://scalesoaring.com/forum/forum/aer...okee-build)

Re: 1/4 scale Hall Cherokee II

by **Noël Rumers**

Posted: **07 Dec 2015, 13:44**

...and an instrument panel, on the net somewhere...???

Noël



Re: 1/4 scale Hall Cherokee II

by Noël Rumers

Posted: 07 Dec 2015, 13:41

Hi Dion,

A friend in the US send me these pictures a few weeks ago.
His friend owns this beauty!!!
Enjoy the details...

Noël





Re: 1/4 scale Hall Cherokee II

by **Dion Dunn**

Posted: **07 Dec 2015, 12:34**

Thanks Vince. Will do. I haven't decided on the final scheme yet. I may do something custom and use that Indian head.

Re: 1/4 scale Hall Cherokee II

by **VinceC**

Posted: **07 Dec 2015, 07:14**

If you want it, just let me know the format you want, i.e. scalable pdf, svg, ai or image formats such as jpeg etc.

Re: 1/4 scale Hall Cherokee II

by **Dion Dunn**

Posted: **06 Dec 2015, 22:30**

Thanks Vince. I like that version of the Head

Re: 1/4 scale Hall Cherokee II

by **VinceC**

Posted: **06 Dec 2015, 08:10**

Dion - Thanks for posting, the cherokee seems to be a popular build in the States. I have artwork for the 'Cherokee Head' if you need it, example small image attached.



Re: 1/4 scale Hall Cherokee II

by **Dion Dunn**

Posted: **05 Dec 2015, 23:30**

After a brief delay, mostly due to my own errors, we are back on track. Marc sent me a new set of center ribs and I was able to get started on the center section. The lower spar cap is permanently in place and the ply ribs and false leading edge are square and set for good. I also added multiplex wing retainers to this one. Of course, my wing rod tube on hand isn't long enough, so I'll need to get to the hobby shop for a replacement. Heading to Boston on business for the next 3 days, so hopefully I can get back to this later in the week.



Re: 1/4 scale Hall Cherokee II

by **terry white**

Posted: **28 Nov 2015, 16:09**

Excellent start Dion, This will be a super thread. 😊

I could not agree more, If you make yourself plod on through a build when you are not enjoying it, it becomes a chore, and the build quality suffers. Far better to put to one side until the spark returns.

Regards Terry.

Re: 1/4 scale Hall Cherokee II

by **Dion Dunn**

Posted: **28 Nov 2015, 14:09**

The next step in the the process was to add the vertical uprights and the diagonal reinforcements making sure the top of the fuselage remains parallel to the table. Once that was completed, I added the additional main former and the fuselage top formers.





Re: 1/4 scale Hall Cherokee II

by **Dion Dunn**

Posted: **28 Nov 2015, 02:09**

Thanks Marc, it's not hard when the laser cut parts just fall together!

Re: 1/4 scale Hall Cherokee II

by **mMarc Beaupre**

Posted: **27 Nov 2015, 23:41**

Very nice build, thanks for posting it.

Re: 1/4 scale Hall Cherokee II

by **Dion Dunn**

Posted: **27 Nov 2015, 12:56**

Next up was connecting the top and bottom frame work to the front of the fuselage. The bottom 1/4" sq stringers are flared into the bottom stringers of the front of the fuselage, while the top 1/4" sq stringers are left extra long so they can run to the front of the fuselage.

The main H former is set in place at an 88 deg angle and connected to the top and bottom stringers. The rear of the fuselage is tied together by the fin upright. This is where my first mistake happened. The fin post was mislabeled as the rudder post, and rather than recognize

the problem I went ahead and modified my stringer to fit the post. After looking at a couple of other online build logs, I realized the problem and corrected the mistake. No issues, just a small setback.



Re: 1/4 scale Hall Cherokee II

by **Dion Dunn**

Posted: **26 Nov 2015, 18:51**

And one more post for the day. The bottom stringers and front formers were added to the floor including the removable battery tray.

Then the top and bottom of the rear fuselage were built over the plans, and I built some risers to lift the rear of the fuselage.





Re: 1/4 scale Hall Cherokee II

by **Dion Dunn**

Posted: **26 Nov 2015, 18:44**

First up, the front part of the fuselage which included steam bending stringers for the bottom of the floor. My clothes steamer doubles as my wood steamer. 😊



This was bending the wood, not attached yet

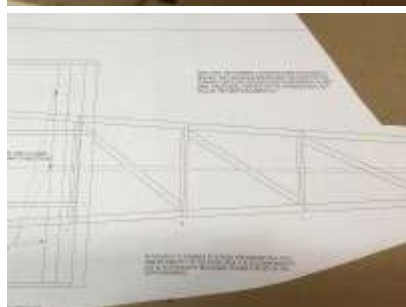
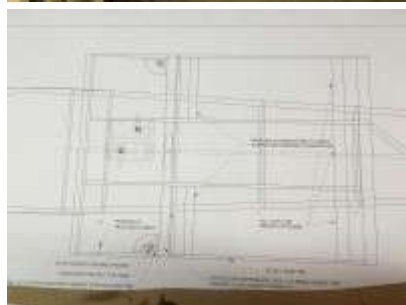
Re: 1/4 scale Hall Cherokee II

by **Dion Dunn**

Posted: **26 Nov 2015, 18:36**

First, some credit where it is due. David Smith was instrumental in helping me with the plans including a couple of modifications to add slightly more scale-like dihedral to the wings and also

a slightly larger spar so I could feel better winching it. When the files were done, Marc Beaupre did the cutting: <http://www.marclasershop.com/>. Meanwhile, I created my own pile of wood for everything not in the short kit.



1/4 scale Hall Cherokee II

by **Dion Dunn**

Posted: **26 Nov 2015, 18:20**

Hello Scalesoaring UK. This will be my first build log on this site, and my first scale sailplane. Definitely not my first airplane or glider, but I'm a rookie with this scale stuff so please bear with me.

I've decided to build the Hall Cherokee II. The Cherokee was an American kit plane from the 60's and many full scale and models have been built over the years. More can be found at the

following sites. Here are also a number of other build logs sprinkled throughout the interweb, but haven't found one on the new version of this site so here goes.

https://en.m.wikipedia.org/wiki/Hall_Cherokee_II

[http://cherokeesailplanes.blogspot.com/ ... -call.html](http://cherokeesailplanes.blogspot.com/...-call.html)

Also, please bear with me. I have a normal life, young family, and career that consumes many, many hours a week. But this is one of my stress reliefs so I neither push hard to complete models nor go very fast. I tend to build in short spurts, i.e. When I have time.

Powered by phpBB® Forum Software © phpBB Limited

All times are UTC
Page **1** of **1**