

Scale Soaring UK

The forum for all your modelling requirements relating to scale gliders
<https://scalesoaring.co.uk/phpBB3/>

Pat teakle asw 20 build

<https://scalesoaring.co.uk/phpBB3/viewtopic.php?f=12&t=2170>

Re: Pat teakle asw 20 build

by **roo Hawkins**

Page 1 of 1

Posted: **19 Apr 2019, 14:24**

Glider now finished



waiting to maiden.

Re: Pat teakle asw 20 build

by **Jolly Roger**

Posted: **21 Jan 2019, 00:12**

roo Hawkins wrote: ↑20 Jan 2019, 14:24

Yes I do have a new phone. ROO 😊

I called it. 😊

Re: Pat teakle asw 20 build

by **roo Hawkins**

Posted: **20 Jan 2019, 14:24**

Hi Brian it is the 5th model I have covered in vinyl now and this is the best one I have done. A lot cheaper and easy to cover than heat film. Would never use heat film again. Unless it is a built up one Yes I do have a new phone. ROO 😊

Re: Pat teakle asw 20 build

by **Jolly Roger**

Posted: **19 Jan 2019, 23:06**

Never mind the vinyl. He got a new phone! He GOT A NEW PHONE! 😊

Re: Pat teakle asw 20 build

by **B Sharp**

Posted: **19 Jan 2019, 19:35**

That's looking fine Roo. How did you get on with the vinyl?
Brian. 😊

Re: Pat teakle asw 20 build

by **roo Hawkins**

Posted: **19 Jan 2019, 12:34**

Tail end now made and the



glider is now covered in sign vinyl.

Re: Pat teakle asw 20 build

by **Peter Balcombe**

Posted: **18 Dec 2018, 19:43**

Well done Roo.

It's looking good.

Soon have a whole new fleet ready for next season. 😊

Re: Pat teakle asw 20 build

by **roo Hawkins**

Posted: **18 Dec 2018, 13:58**

Canopy fixed



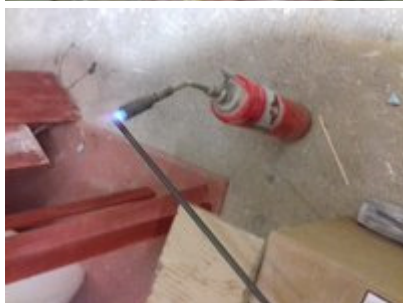
Canopy fixed

Re: Pat teakle asw 20 build

by **roo Hawkins**

Posted: **11 Dec 2018, 18:55**

A load of work done. Canopy frame finished ready for canopy



servo holes and channels cut and now ready for covering.

Re: Pat teakle asw 20 build

by **terry white**

Posted: **10 Dec 2018, 01:30**

Looks good Roo. Ter

Re: Pat teakle asw 20 build

by **B Sharp**

Posted: **09 Dec 2018, 16:52**

That all looks about right Roo. It's coming on quite nicely now.

Brian. 😊

Re: Pat teakle asw 20 build

by **roo Hawkins**

Posted: **08 Dec 2018, 18:06**

Started the canopy .





Pvc foam and glass 1 hours work

Re: Pat teakle asw 20 build

by **B Sharp**

Posted: **04 Dec 2018, 13:01**

Hi guys. Can we all group together and buy Roo a new camera for his Christmas, then we could see what he is up to!

Brian 😄

Re: Pat teakle asw 20 build

by **Geoff Pearce**

Posted: **04 Dec 2018, 08:43**

Hi Roo,

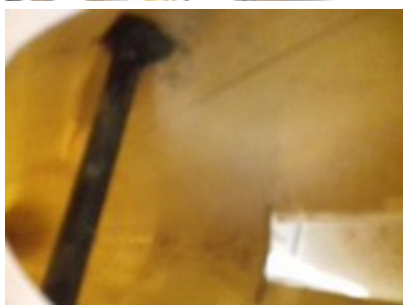
Spare bedroom ,radiator up ,no problem I won't tell Rachel 😄😄😄😄😄😄😄

Re: Pat teakle asw 20 build

by **roo Hawkins**

Posted: **03 Dec 2018, 18:19**

I have got back to doing the asw 20 after taking a break from it because I wanted to get two other fuselages glassed before the cold weather is here. As they are too big to fit in my hot box.



I have glassed the wing tubes in the wings and fuz. I have also made up the joiner out of 14 mm

steel rod glued inside a 16mm carbon tube.

Re: Pat teakle asw 20 build

by **roo Hawkins**

Posted: **26 Jul 2018, 18:10**

Leading edge and trading edge glued on and shaped.



Wings filled had to mix small amounts of filler has it was going off to fast in hot weather .

Re: Pat teakle asw 20 build

by **Barry_Cole**

Posted: **24 Jul 2018, 20:36**

Ready for the varnish then.



BC

Re: Pat teakle asw 20 build

by **roo Hawkins**

Posted: **24 Jul 2018, 17:13**

Panels veneered



Panels veneered

Re: Pat teakle asw 20 build

by **roo Hawkins**

Posted: **20 Jul 2018, 17:10**

All the spars fitted and glass tape applied.



Now ready for veneer.

Re: Pat teakle asw 20 build

by **roo Hawkins**

Posted: **18 Jul 2018, 16:27**

Leading edge cut off and shear Web cut and will be glued in later today.



When I cut the leading edge off one wing had a bad bow in the inside panel from the bow drag. So I cut a new panel and grafted it with the old outside panel. .so now all good.

Re: Pat teakle asw 20 build

by **Peter Balcombe**

Posted: **17 Jul 2018, 21:23**

Roo,

In that case, it is almost certainly a Ritz3 section as for the PT Vega.

Peter

Re: Pat teakle asw 20 build

by **roo Hawkins**

Posted: **17 Jul 2018, 21:17**

The same has the original taken from the root and a tip template taken from Brian sharps at the weekend. Brian sharps flew fantastically over the weekend so can not see that it needs changing. The span has been lengthened to 5 m though. Roo ☺

Re: Pat teakle asw 20 build

by **Peter Balcombe**

Posted: **17 Jul 2018, 18:30**

What wing section are you using Roo?

Pat teakle asw 20 build

by **roo Hawkins**

Posted: **17 Jul 2018, 18:05**

After seeing Brian sharps fantastic pt asw 20 fly at the mynd over the weekend I have started my build.



The fuz is from cliff Evans and I am cutting the wings myself out of blue foam. started yesterday fitted spars today.